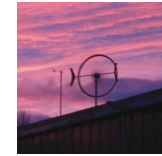


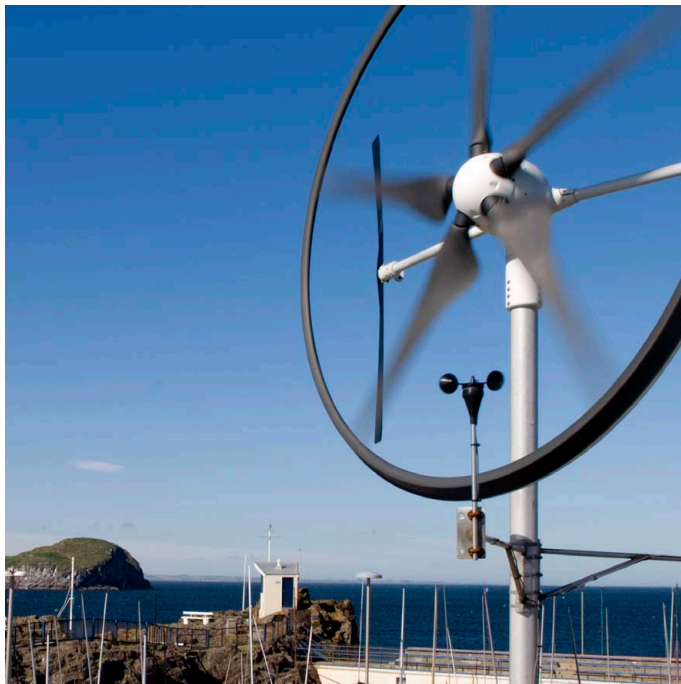
# Frequently Asked Questions



**SWIFT™**  
Wind Energy System

**How much electricity will it generate?** In a good wind resource, the Swift™ will generate up to 2000kWh of electricity annually.  
(To put that into perspective for you, 2000kWh is the amount of energy needed to keep an eco-friendly lightbulb constantly lit for 23 years!)

**How reliable is that data?** Our energy predictions and power curve have been independently verified and endorsed by the Energy Savings Trust.

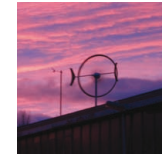


**How much electricity does an average house use?** The average three bedroom house in the UK uses 4700kWh of electricity annually (Source: BWEA). A well sited Swift™ could therefore provide up to 40% of the average home's electricity.

**How much will it cost?** A standard building mounted Swift™ will cost around £5500 exclusive of VAT and installation. You should budget approximately £1500 for installation. Grant funding can reduce the overall cost by 30% for domestic customers and 50% for schools and community groups.

**What is the projected payback period?** A well sited Swift™ will payback in as little as 5 years (figure based on 2000kWh annual generation, total cost inclusive of grant funding and financial incentives for renewable energy generation).

**What funding is available and where do I get it?** Both the Low Carbon Buildings Programme and the Energy Savings Trust provide grant funding for domestic and community renewables projects. Funding for commercial projects may be available through industry specific renewables programmes.



**Do I need planning permission?** Yes, at present. Micro-wind systems are expected to be approved within the General Permitted Development Order in 2009, after which planning consent will not be required for Swift™ installations except on listed buildings and in conservation areas. Contact your local council for details and an application form.

**Can vibration from the turbine transfer to the building?** The Swift™ has been designed to be building mounted and therefore our bespoke mounting systems can absorb vibration created by the turbine.

**Who can install it?** The Swift™ must be installed by a Renewable Devices accredited installer. Installers are available across the UK and internationally. The Swift™ is not a DIY product and will not be covered under warranty without a commissioning certificate from an accredited Swift™ installer.

**How much CO2 does it save annually?** 1.2 tonnes on a 2000kw site- that's equivalent to a transatlantic flight!

**Is it connected to the grid?** The Swift™ can be grid connected or charge a battery bank.

**Can I arrange to be paid for energy returned to the grid?** Yes. Renewable Obligation Certificates (ROCs) are payable once your generation exceeds 1000kWh. Contact your local District Network Operator for details. Feed in Tariffs will also reward customers for every kWh of energy generated.

**What is the warranty?** Your warranty is held with your installer. The manufacturers warranty is two year return to base.

**What is the expected life?** The design life is 20 years.

